

54/94

A PORTION OF A P.U.D.

SHEET 2 OF 2 SHEETS

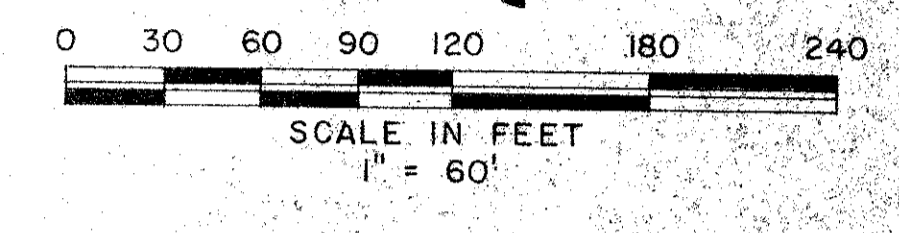
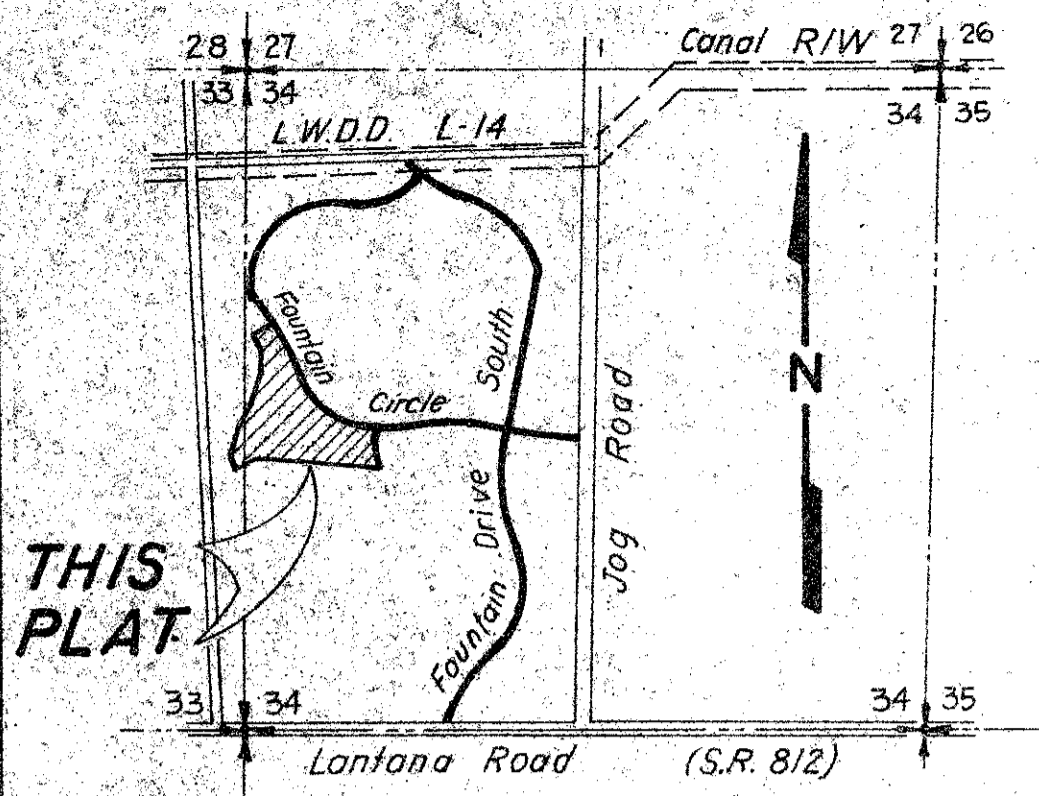
FOUNTAINS SOUTH TRACT B-3-2

REPLAT OF A PORTION OF BLOCK 31 OF PALM BEACH FARMS CO. PLAT No. 3 (P.B. 2, PG. 45-54, P.B.C.R.) SECTION 34, TOWNSHIP 44 SOUTH, RANGE 42 EAST PALM BEACH COUNTY, FLORIDA

Prepared By:
CRAIG A. SMITH & ASSOCIATES
CONSULTING ENGINEERS & SURVEYORS
1000 WEST McNAB ROAD
POMPAHO BEACH, FLORIDA
By: **FREDERICK E. CONROD III, P.L.S. #2816**

94

STATE OF FLORIDA
COUNTY OF PALM BEACH } S.S.
THIS PLAT WAS FILED FOR
RECORD AT _____ THIS
DAY OF _____, 1986, A.D.,
AND DULY RECORDED IN PLAT BOOK
No. _____ ON PAGE
AND _____
JOHN B. DUNKLE, CLERK
BY: _____, D.C.



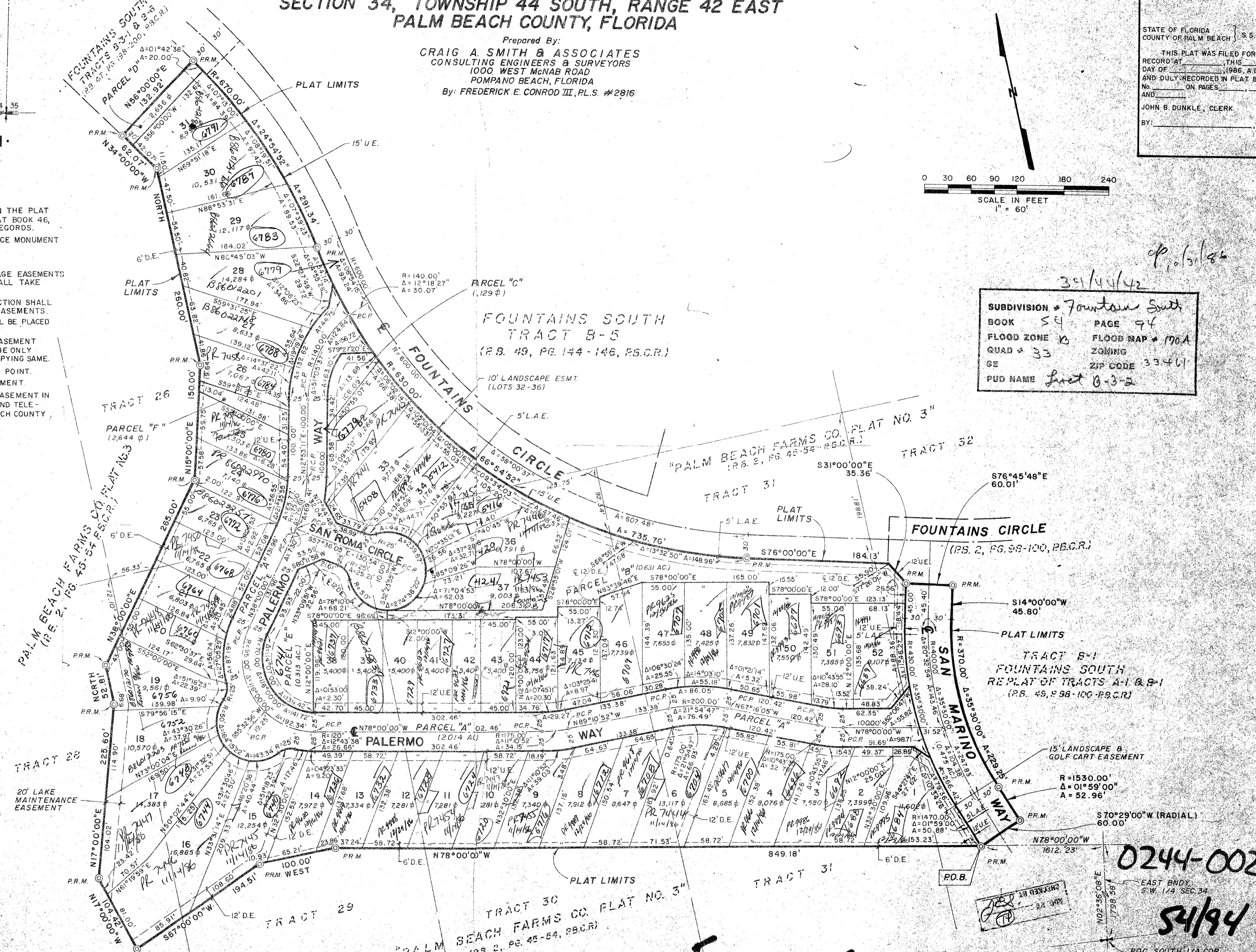
SURVEY NOTES:

- BEARINGS SHOWN HEREON ARE BASED ON THE PLAT "FOUNTAINS SOUTH" AS RECORDED IN PLAT BOOK 46, PAGES 28 & 29, PALM BEACH COUNTY RECORDS.
- © P.R.M. INDICATES PERMANENT REFERENCE MONUMENT
- U.E. DENOTES UTILITY EASEMENT.
- D.E. DENOTES DRAINAGE EASEMENT.
- WHERE UTILITY EASEMENTS AND DRAINAGE EASEMENTS CROSS, THE DRAINAGE EASEMENTS SHALL TAKE PRECEDENCE.
- NO BUILDINGS OR ANY KIND OF CONSTRUCTION SHALL BE PLACED ON UTILITY OR DRAINAGE EASEMENTS.
- NO STRUCTURES, TREES OR SHRUBS SHALL BE PLACED ON DRAINAGE EASEMENTS.
- APPROVAL OF LANDSCAPING ON UTILITY EASEMENT OTHER THAN WATER AND SEWER SHALL BE ONLY WITH APPROVAL OF ALL UTILITIES OCCUPYING SAME.
- © P.C.P. INDICATES PERMANENT CONTROL POINT.
- L.A.E. INDICATES LIMITED ACCESS EASEMENT
- SUBJECT TO BLANKET RIGHT-OF-WAY EASEMENT IN FAVOR OF SOUTHERN BELL TELEPHONE AND TELEGRAPH IN O.R.B. 2502, P. 235, PALM BEACH COUNTY RECORDS.
- ⊕ INDICATES SQUARE FOOTAGE.

DRAWING NUMBER

DRAWING NUMBER

DRAWING NUMBER



391/44/42
 SUBDIVISION * Fountains South
 BOOK 54 PAGE 94
 FLOOD ZONE 10 FLOOD MAP * 170A
 QUAD * 33 ZONING
 SE ZIP CODE 33461
 PUD NAME Tract B-3-2

0244-002

54/94

FOUNTAINS SOUTH TRACT B-3-2